

**STATE UNIVERSITY OF NEW YORK  
EMPIRE STATE COLLEGE**

**2016 CAMPUS STATEMENT**

Empire State College was founded in 1971, the creation of Chancellor Earnest Boyer and Governor Nelson Rockefeller, for the purpose of expanding access to higher education for non-traditional students through innovative means. The College offers both undergraduate and graduate programs at seven regional centers and 28 satellite locations throughout New York State, as well as on-line courses through the Center for Distance Learning (CDL), and International Programs, in which the College partners with host institutions abroad. The College's administrative offices, referred to as the Coordinating Center, are located in Saratoga Springs. Currently, the College employs 1,785 full- and part-time employees statewide. Full- and part-time faculty represents 60 percent of the total. Since its founding in 1971, Empire State College has developed an alumni base of more than 78,000. Current enrollment at the College with comparative data from 2014-15 are highlighted in the following table:

|                                   | 2014-15 Enrollment |              |                             | 2015-16 Enrollment |              |                             |
|-----------------------------------|--------------------|--------------|-----------------------------|--------------------|--------------|-----------------------------|
|                                   | Headcount          | FTE          | Actual Student Credit Hours | Headcount          | FTE          | Actual Student Credit Hours |
| Regional Learning Centers         | 9,135              | 4,449        | 133,463                     | 8,869              | 4,312        | 129,367                     |
| School for Graduate Studies       | 1,498              | 516          | 12,385                      | 1,407              | 495          | 11,874                      |
| Center for Distance Learning      | 6,814              | 3,257        | 97,700                      | 6,550              | 3,076        | 92,270                      |
| Center for International Programs | 666                | 297          | 8,895                       | 882                | 332          | 9,973                       |
| School of Nursing                 | 1,027              | 412          | 12,202                      | 957                | 378          | 11,065                      |
| <b>Total</b>                      | <b>19,140</b>      | <b>8,931</b> | <b>264,645</b>              | <b>18,665</b>      | <b>8,593</b> | <b>254,549</b>              |

Note: The Harry Van Arsdale Jr. Center for Labor Studies is embedded within the Regional Learning Centers.

Currently, Empire State College operates from 43 buildings totaling 417,360 square feet. Our largest concentration of college facilities are in Saratoga Springs where the College occupies seven main buildings totaling 205,988 square feet. In an additional 34 municipalities spread across the State, the College occupies locations in mix of commercial, state office buildings, a military base, and other SUNY buildings with a total of 211,372 square feet via lease or MOU at an annual cost of approximately \$5.7 million.

The College continues to work with its Foundation to transfer Foundation-owned properties to the State. In 2014, 111 West Avenue in Saratoga Springs was acquired saving the College over \$1 million per year in rent. The building located at 3 Union Avenue is planned to be transferred to the State of New York by July 2023 as part of a 10 year lease-to-own transaction. In August 2014, the SUCF started construction of the Rochester Regional Center and was completed in June 2016. The SUCF is also engaged with the College finalizing construction documents for the construction of the Suffolk Regional Center expected to begin in spring 2017. In addition, designs are anticipated to be complete during 2016-17 for interior and exterior projects at 111 West Avenue.

**State University of New York  
Empire State College**

**Facility Profile**

| Facility Profile                                    | Instructional & Support | Residential | Total   |
|---|-------------------------|-------------|---------|
| Total State Owned Acreage                           |                         |             | 16.04   |
| Total State Owned Buildings                         | 6                       | 0           | 6       |
| Total State Owned Gross Square Feet (GSF)           | 186,335                 | 0           | 186,335 |
| Total State Owned Net Assignable Square Feet (NASF) | 113,632                 | 0           | 113,632 |

| Age of Facilities       | < 10 Years | 10 – 40 Years | > 40 Years |
|-------------------------|------------|---------------|------------|
| Gross Square Feet       | 100,763    | 51,977        | 33,595     |
| Percentage of Total GSF | 54.1%      | 27.9%         | 18.0%      |

| Net Assignable Space Distribution by Major Functional Area |          |                    |                |                  |             |       |
|--|----------|--------------------|----------------|------------------|-------------|-------|
| Instructional  | Research | Student Activities | Administration | Central Services | Residential | Total |
| 26%  | 0%       | 2%                 | 59%            | 14%              | 0%          | 100%  |



# EMPIRE STATE COLLEGE

Campus Owned Facilities

## BUILDING INDEX

- F108. 28 UNION AVENUE
- F128. 1 UNION AVENUE
- F140. 2 UNION AVENUE
- 118. 3 UNION AVENUE
- 229. 111 WEST AVENUE
- 131. 113 WEST AVENUE
- 331. 21 ALETTA STREET (not shown)

 ACADEMIC BUILDINGS

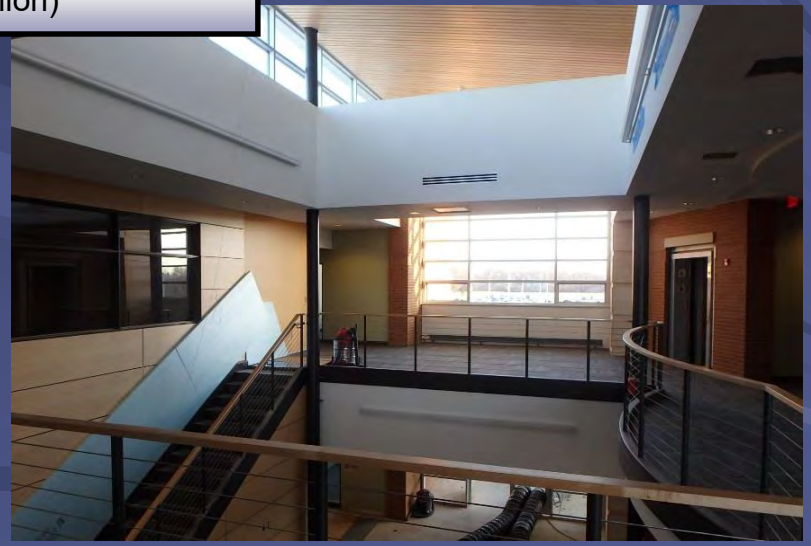
FALL 2015



NORTH



Construct Regional Centers Statewide  
(\$31.1 Million)



**Empire State College**

State University of New York 2016/2017 Capital Program Plan (In Thousands)  
Major Ongoing Non-Hospital Projects (Over \$1M Construction Cost)

**State University of New York Empire State College**

**PROJECTS UNDER DESIGN**

|                         |                              |                           |                           |                            | Anticipated Start of Construction |       |       |       |       |
|-------------------------|------------------------------|---------------------------|---------------------------|----------------------------|-----------------------------------|-------|-------|-------|-------|
| Capital Plan Projects   | Total Estimated Project Cost | YTD Expend. thru 07-31-16 | LTD Expend. thru 07-31-16 | Encumbered Amount 07-31-16 | 16/17                             | 17/18 | 18/19 | 19/20 | 20/21 |
| Rehab Envelope 111 West | \$1,231                      | \$0                       | \$0                       | \$209                      |                                   | X     |       |       |       |
| <b>Design Totals:</b>   | <b>\$1,231</b>               | <b>\$0</b>                | <b>\$0</b>                | <b>\$209</b>               |                                   |       |       |       |       |

**PROJECTS UNDER CONSTRUCTION**

|                                      |                              |                           |                           |                            | Anticipated Completion Date |       |       |       |       |
|--------------------------------------|------------------------------|---------------------------|---------------------------|----------------------------|-----------------------------|-------|-------|-------|-------|
| Capital Plan Projects                | Total Estimated Project Cost | YTD Expend. thru 07-31-16 | LTD Expend. thru 07-31-16 | Encumbered Amount 07-31-16 | 16/17                       | 17/18 | 18/19 | 19/20 | 20/21 |
| Construct Regional Centers Statewide | \$31,115                     | \$7,200                   | \$12,337                  | \$1,704                    |                             |       | X     |       |       |
| <b>Construction Totals:</b>          | <b>\$31,115</b>              | <b>\$7,200</b>            | <b>\$12,337</b>           | <b>\$1,704</b>             |                             |       |       |       |       |

State University of New York 2016/2017 Capital Program Plan (In Thousands)  
 Future Planned Projects - Over \$1M Construction (Non-Hospital)

**State University of New York Empire State College**

| Capital Plan Projects                        | Total Estimated Project Cost | Funds Available | Funds Needed to Complete | SFY 2016/2017 Phase \$ | SFY 2017/2018 Phase \$ | SFY 2018/2019 Phase \$ | SFY 2019/2020 Phase \$ | SFY 2020/2021 Phase \$ |
|--|------------------------------|-----------------|--------------------------|------------------------|------------------------|------------------------|------------------------|------------------------|
| Upgrade IT Infrastructure - Various Location | \$3,000                      | \$0             | \$3,000                  |                        | D \$1,000              |                        |                        |                        |
| Renovate 3 Union Avenue                      | \$2,352                      | \$0             | \$2,352                  |                        |                        | C \$4,000<br>D \$348   |                        | C \$2,004              |
| <b>Capital Plan Project Totals:</b>          | <b>\$5,352</b>               | <b>\$0</b>      | <b>\$5,352</b>           | <b>\$0</b>             | <b>\$1,000</b>         | <b>\$4,348</b>         | <b>\$0</b>             | <b>\$2,004</b>         |

---

Project Phases: A = Acquisition, D = Design, C = Construction, E = Equipment

State University of New York Summary of Changes Capital Program Plan (In Thousands)  
 Non-Hospital Project Cross-Reference: Current Year Status vs. Last Year

**State University of New York Empire State College**

| Capital Plan Project                 | 2015<br>Estimated<br>Project Cost | 2016<br>Estimated<br>Project Cost | Incr.Decr.<br>In<br>Estimate Cost |
|--------------------------------------|-----------------------------------|-----------------------------------|-----------------------------------|
| <b>Projects Under Design</b>         |                                   |                                   |                                   |
|                                      | \$0                               | \$0                               | \$0                               |
|                                      | <b>Phase Total:</b>               | <b>\$0</b>                        | <b>\$0</b>                        |
| <b>Projects Under Construction</b>   |                                   |                                   |                                   |
| Construct Regional Centers Statewide | \$31,098                          | \$31,115                          | \$17                              |
|                                      | <b>Phase Total:</b>               | <b>\$31,098</b>                   | <b>\$17</b>                       |
| <b>Completed Projects</b>            |                                   |                                   |                                   |
|                                      | \$0                               | \$0                               | \$0                               |
|                                      | <b>Phase Total:</b>               | <b>\$0</b>                        | <b>\$0</b>                        |